

# Peltier Controller

with Universal Temperature Controller

PLC-24V6A

Temperature Tracing Function



Maximum Peltier Drive 24V, 6A

Small Size for Embedded

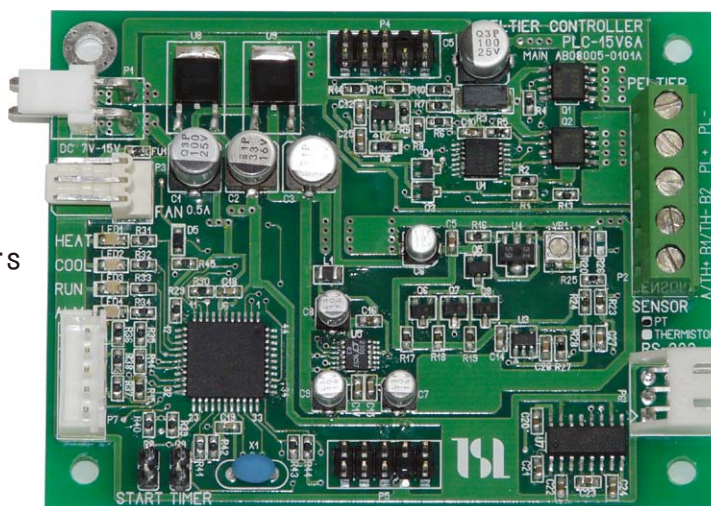
- Adapt NTC Thermistor or Pt Sensor
- PI control PWM-drive
- Continuous-mode / Timer-mode
- RS232 Interface Built In
- Can Operated In Standalone  
By Adding Display Option
- Board size 85mm(W) x 65mm(D)

HEAT



KURAG  
ELECTRONICS

COOL



【Main Board】

Power Supply Input  
Fan Power Output  
Operation Indicators

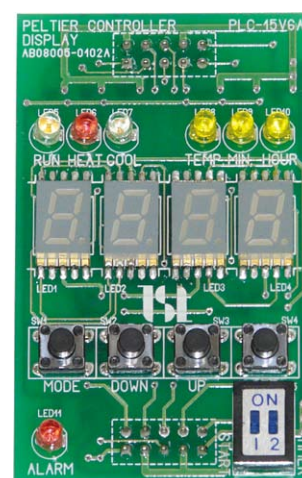
Peltier Drive Output  
Thermal Sensor Input  
Connector for RS232

Ext Control Terminals

Electric Specification

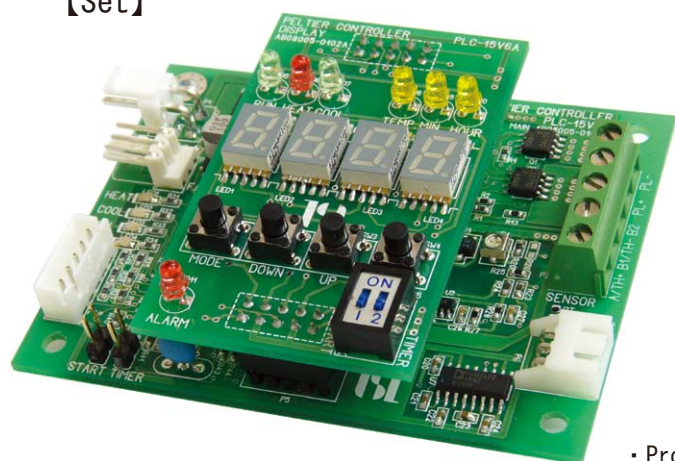
- ◎Operating Supply Voltage DC7V ~ 24V
- ◎Maximum Peltier Drive Power 24V、6A  
(Drive Voltage Is Limited By Supply Voltage)
- ◎Fan Output Supply Voltage or 5V/12V (500mA) optional
- ◎Adjustable Thermal Sensor Parameters
- ◎Various Alarm Function

【Display Board】 (Option)



Control Range (Thermistor) -10.0 ~ +80.0 °C  
(Pt Sensor) -20.0 ~ +100.0 °C  
Resolution 0.1 °C  
Timer 0.1 to 999.9 minutes  
0.1 to 720 hours

【Set】



Standard price (without TAX)

Main Board	Please inquire
Display Board	Please inquire
Set price	Please inquire

Accessories

- RS232 cable (Length 100mm)
- Available Application Software Download

- Product specifications or Board size may change for improvement
- Must choose The sensor type when order
- Must choose Fan output voltage when order
- can specialise parameters regarding your requests  
such as temperature range and others
- Power cable not included
- The Case model also available. Please contact us for more information



**KURAG  
ELECTRONICS**

Manufacturer:  
KURAG ELECTRONICS LLC  
Tokyo, Japan  
TEL : +81-42-843-2712  
E-mail : kurag.tslab@biz.nifty.jp  
URL : <http://kurag.o.oo7.jp/kurag-el/>

Contact Us---